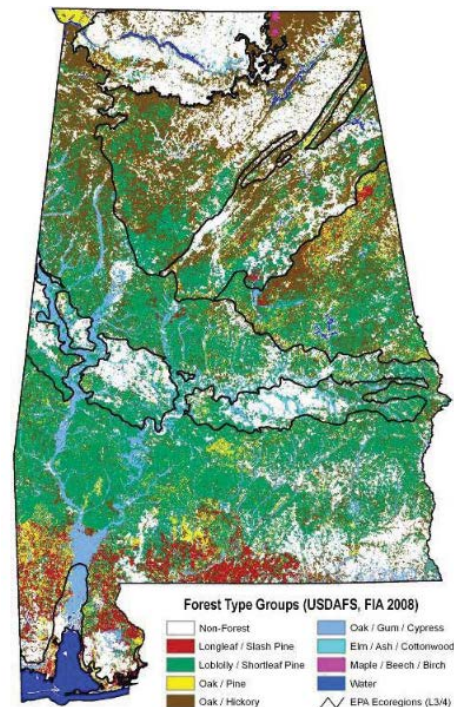


ALABAMA'S FOREST FACTS: A RURAL ECONOMIC DEVELOPMENT OPPORTUNITY

ALABAMA'S FOREST RESOURCES

- Alabama is located in the heart of the southern U.S. with approximately 23 million acres of timberland (*2017 Alabama Forest Resource Report*).
- The single most prevalent forest type is softwood (mostly pine) at 45% of stands, followed by 42% hardwood stands, and 13% mixed hardwood/pine stands (*2017 Alabama Forest Resource Report*).
- Alabama has the third most timberland acreage in the 48 contiguous states, behind only Georgia and Oregon.
- The state's timberland acreage is 94% privately owned (*2017 Alabama Forest Resource Report*). That places Alabama second only to Georgia for private commercial timberland acreage.
- Alabama has 40.3 billion cubic feet of standing timber, the largest recorded inventory in the state's history (*FIA Data*).
- The state is gaining timber volume at a higher rate than most all other Southeastern states showing a 30.8% increase between the periods of 2001 to 2017 (*FIA Data*).
- Sawtimber size stands comprise 49% of the state's timberland, while 28% of forest stands are comprised of mostly pulpwood-sized timber. Seedling/sampling sized stands account for the remaining 23% of timberland acreage (*2017 Alabama Forest Resource Report*).
- The state leads the nation in loblolly pine growing stock volume with 523.2 million tons (*2017 Alabama Forest Resource Report*).
- The softwood 2017 growth-to-drain ratio is +1.68 : 1 (*Alabama Forestry Commission/U.S. Forest Service/FIA*)
- The hardwood 2017 growth-to-drain ratio for is +2.11 : 1 (*Alabama Forestry Commission/U.S. Forest Service/FIA*).



IMPRESSIVE INDUSTRY

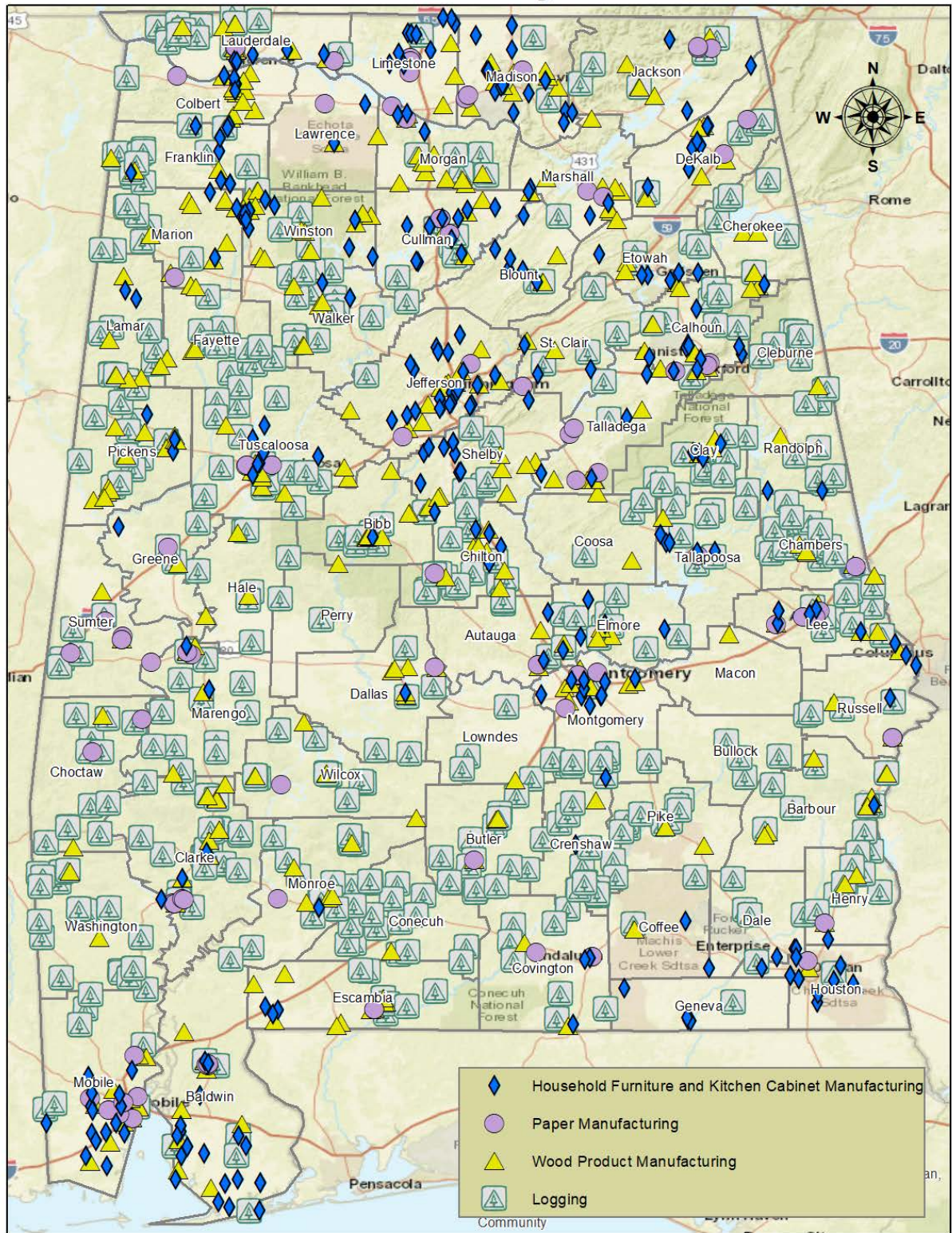
- Alabama's manufacturing rankings in the U.S. are:
 - 2nd in pulp production (*AIDT Forest Product Development Center*),
 - 2nd in paper and paperboard production (*AIDT Forest Product Development Center*),
 - 6th in lumber production (*AIDT Forest Product Development Center*),
 - 6th in panel production (*AIDT Forest Product Development Center*),
 - 811 establishments located throughout the state (*Alabama Department of Labor*)
- The state's industrial economic contributions include:
 - 41,700 direct jobs (*Alabama Department of Labor*),
 - \$2.1 billion in wages (*Alabama Department of Labor*),
 - \$16.3 billion in product shipments annually (*AIDT/Forest Product Development Center*),
 - \$1.5 billion in exports (*Alabama Department of Commerce*).
- Forest industry state-wide economic development announcements:
 - An impressive new & expanding capital investment of approximately \$5 billion and 8,800 associated direct job creations has been generated within the previous 10 years (*Alabama Department of Commerce/AIDT Forest Product Development Center*).

**Forest Products Totals for New & Expanding Industry
2008 - 2017**

Year	Total Projects	Total Jobs	Total Capital Investment
2017	47	1,464	\$1,284,628,303
2016	50	1,005	\$1,196,773,911
2015	43	917	\$897,061,100
2014	33	799	\$640,750,000
2013	35	1,385	\$209,526,000
2012	31	1,235	\$302,599,400
2011	24	566	\$161,297,013
2010	27	348	\$118,409,755
2009	23	599	\$102,806,380
2008	17	469	\$65,408,749

Source: Alabama Department of Commerce/KJM

Alabama Forestry Products



Source: Alabama's Quarterly Census of Employment and Wages, 2nd Quarter 2016

Alabama Department of Labor
Labor Market Information Division

ALABAMA FOREST-BASED ECONOMIC DEVELOPMENT ADVANTAGES

Initiatives



Favorable Business Environment



QUESTIONS OR INQUIRIES?

Please contact the following professional staff at the Alabama Forestry Commission regarding forest resource data or forest-based economic development requests. They are:

Mr. Dan Chappell, Forest Inventory Specialist, R.F.

Tel: 334.240.9370

Email: james.chappell@forestry.alabama.gov

Mr. Gary Faulkner, Forest Economic Development Specialist, R.F.

Tel: 334.240.9320

Email: gary.faulkner@forestry.alabama.gov



Alabama Forestry Commission

513 Madison Avenue

Montgomery, Alabama 36104-3631

www.forestry.alabama.gov